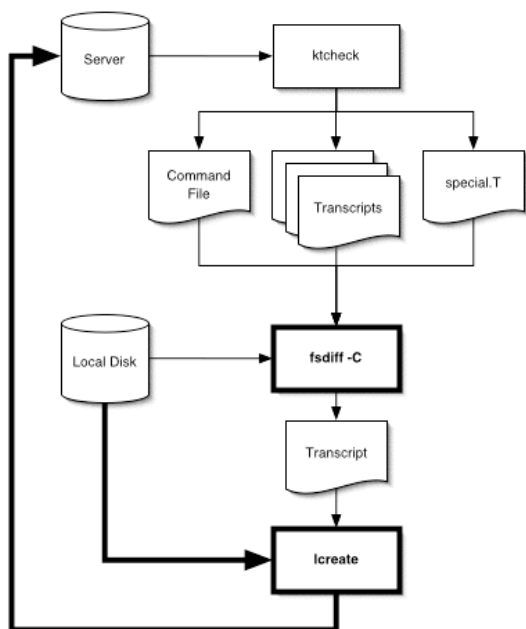




# radmind

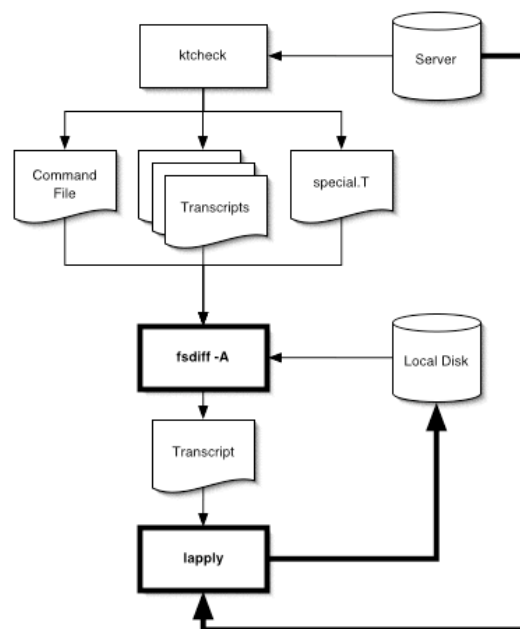
R A D M I N D . O R G

## Creating a loadset



1. **ktcheck** gets the client's command file, transcripts and special.T from the radmind server.
2. **fsdiff -C** compares the local disk against the transcripts and produces an "create"-able transcript for the loadset that describes the additions and/or modifications.
3. **lcreate** stores the transcript and associated files on the radmind server.

## Updating the client



1. **ktcheck** gets the client's command file, transcripts and special.T from the radmind server.
2. **fsdiff -A** compares the local disk against the transcripts and produces an "apply"-able transcript describing how to bring the client up to date.
3. **lapply** modifies the local host as described by the transcript, downloading missing files from the radmind server.

